

Pollinators & Native Plants



Why "Bee" concerned about Pollinators?

Native Plants and Pollinators go hand-in-hand. Michigan butterflies, moths, bees, hummingbirds and other insects rely upon native nectar and host plants.

- Pollinators are needed for the reproduction of 90% of all flowering plants
- Pollinators are needed for the production of 1/3 of human food crops
- Non-native plants, in general, support far fewer native insects and birds than native plants do
- Some pollinators cannot survive without the presence of a specific plant or plant group, such as the Monarch and Milkweeds. And, similarly, some plants require specific pollinators
- Pollinators are in decline due to increased pesticide use, decrease in natural habitats, and increases in non-native invasive plants



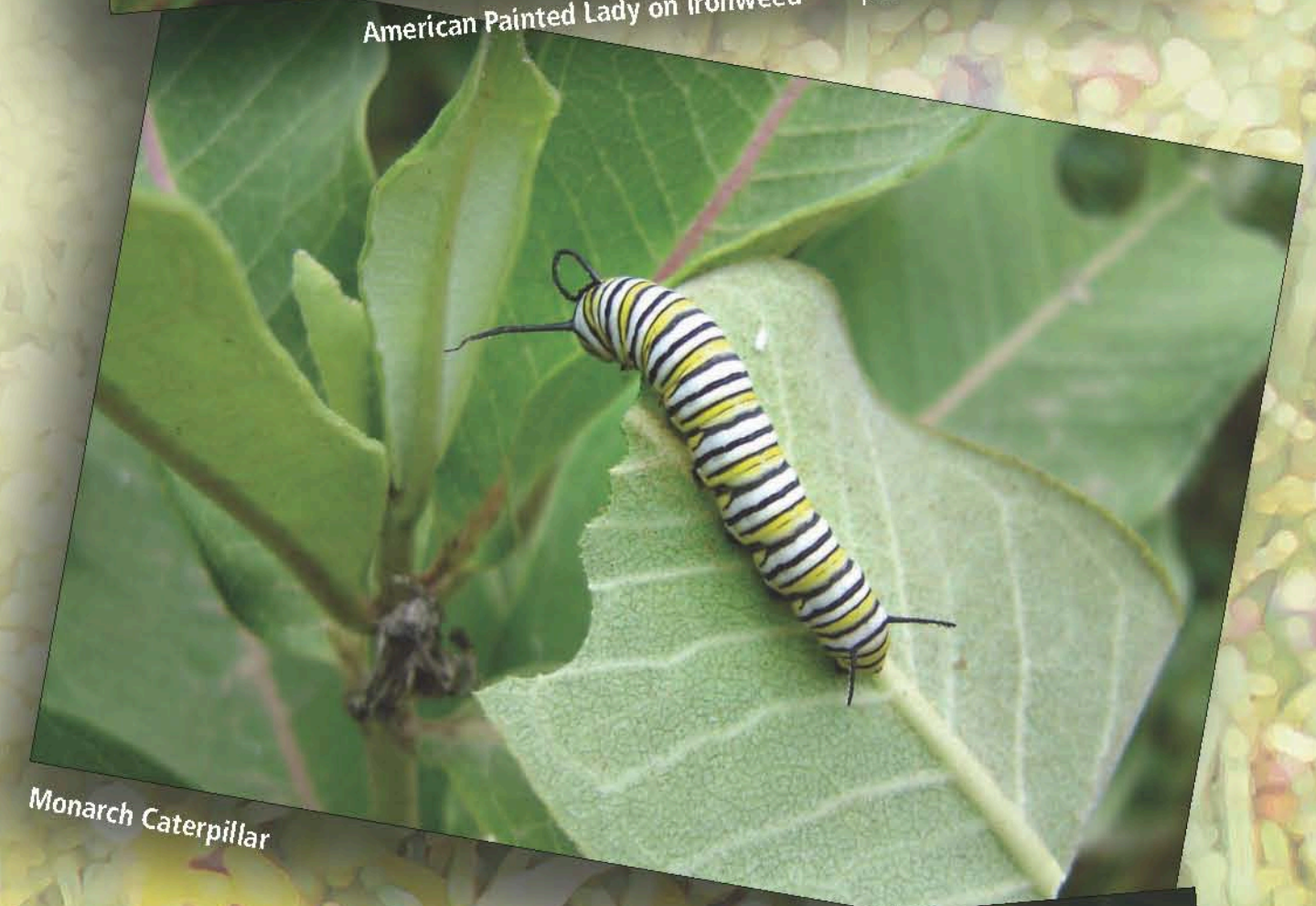
Bumblebee on Monarda



Chain Dotted Geometer photo credit: Brett A. Shelagowski



American Painted Lady on Ironweed photo credit: Brett A. Shelagowski



Monarch Caterpillar



Fritillary on Hill's Thistle photo credit: Chris M. Schumacher



Coral Hairstreak and Fritillary on Butterflyweed photo credit: Brett A. Shelagowski



American Copper on Blazing Star photo credit: Brett A. Shelagowski



Monarch on Blazing Star photo credit: Brett A. Shelagowski



Help protect the "Birds and Bees" - Use locally native plants in your landscape